

03 / PREMATURE FAILURE IN BEARINGS

MOUNTING OF THE BEARING WITHOUT USING FERSA MOUNTING TOOLS

⊘ CAUSES

- We installed the bearings by pushing them directly on the bearing cone, damaging the whole piece.

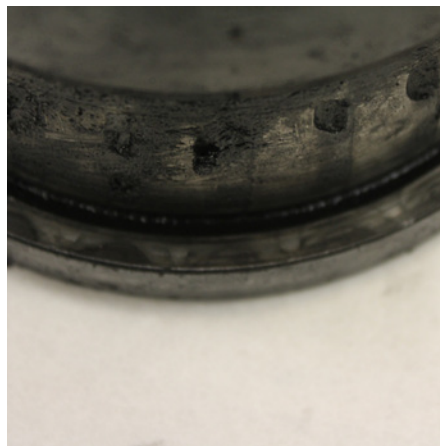
⚠ CONSEQUENCES

- Marking the outer ring with the rollers when pushing from the cone. (F1)
- Premature noise.
- Detachment of material when rotating, due to the marks produced. (F2)
- If you do not solve the above problem, there will be a seizure of the bearings caused by the detachment of the material. (F3)

(F1)



(F2)



(F3)



RECOMMENDATION

The Fersa fitters are specially designed to lock the seal and bearing without damaging any component.
Read the instructions for the correct use.